



January 2017

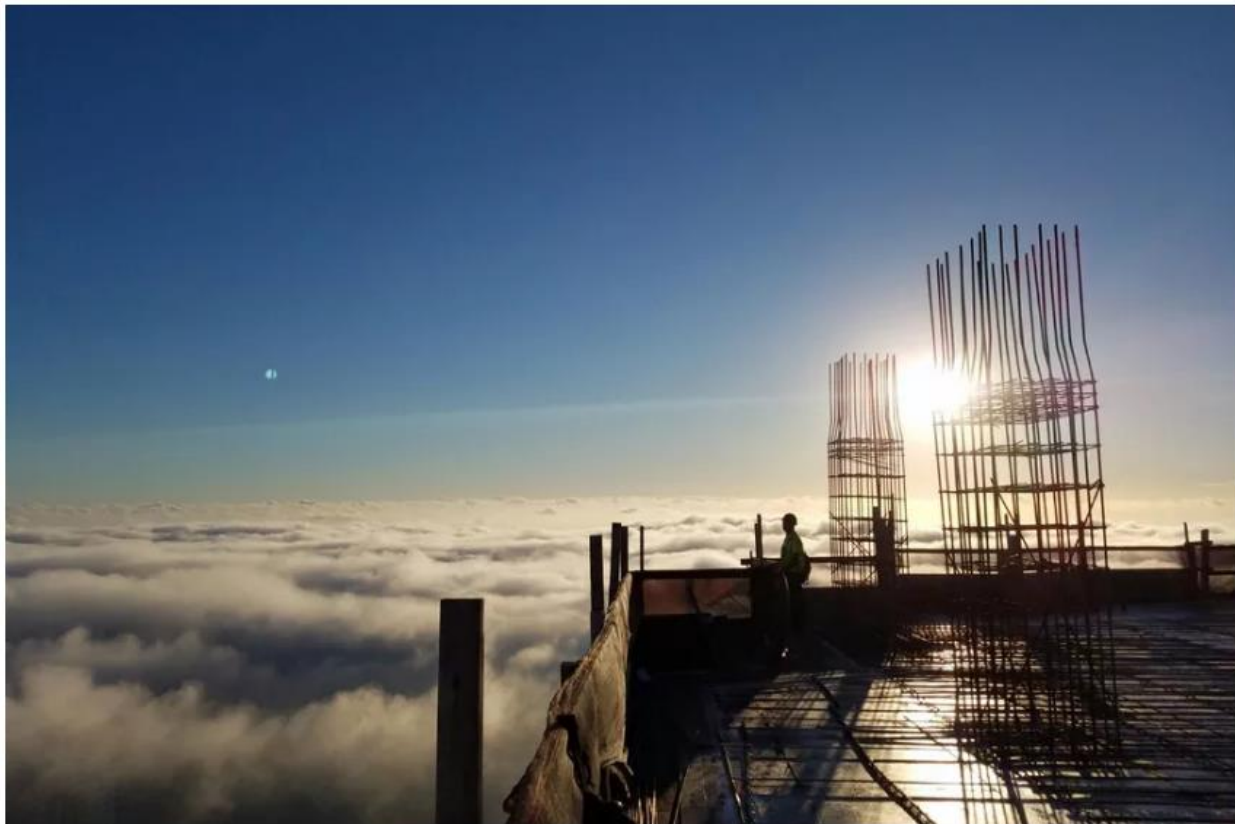
BRICKELL MIAMI DEVELOPMENT NEWS

Miami's Panorama Tower in Brickell is soaring above the clouds

The tallest building in Miami

BY JOSH BAUMGARD | JAN 25, 2017, 11:51AM EST

TWEET SHARE PIN REC



A view from the 76th floor at the Panorama Tower in Brickell | Courtesy of Florida East Coast Realty

Miami's Panorama Tower in Brickell is on its way to becoming the tallest building building in Miami, with construction reaching the 76th floor and close to surpassing the Four Seasons' 789 feet.

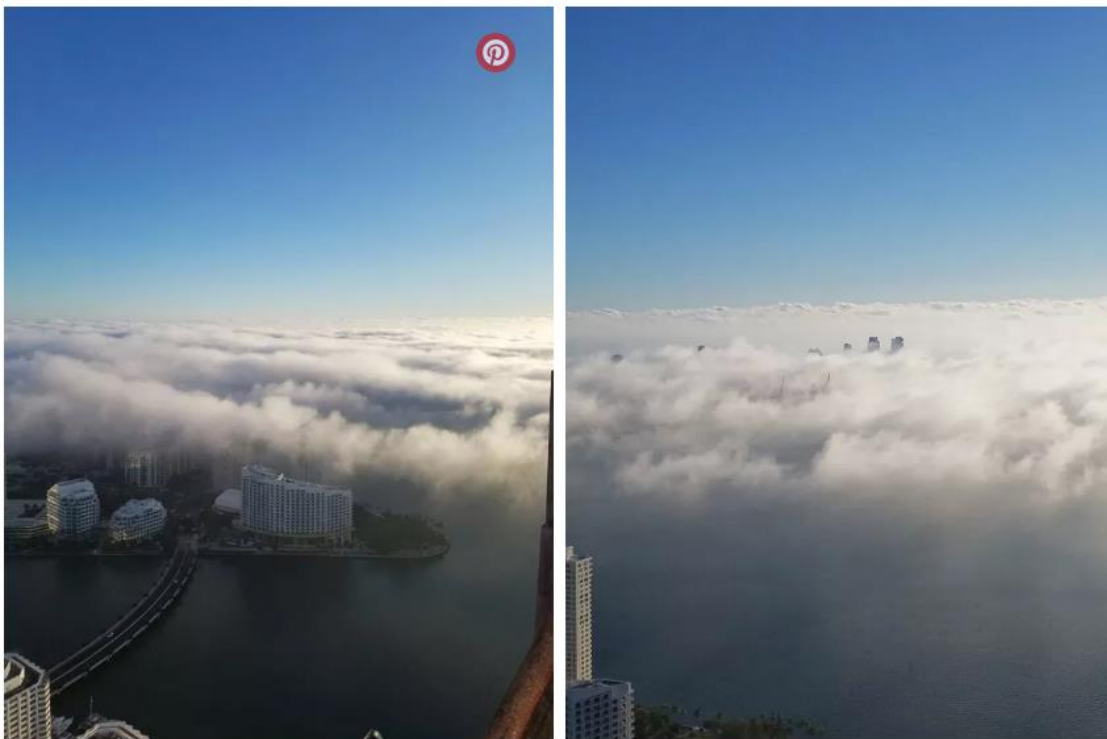


Yet the title will likely be a temporary one for **the 830-foot tower** that will top off at 85 stories this year, as monstrosities like **The Towers** and **One Bayfront Plaza** are in the planning stages.

Last time we checked in was in October of last year when construction **hit the 57th floor**. Well, 19 floors later and the view is heavenly, looking down upon the clouds, the core of Miami, and neighboring bodies of water.

Upon completion, the mixed-use development will inject 821 luxury apartments, 208 hotel rooms, 100,000 square feet of medically-oriented office space, and 500,000 square feet of high-end retail into Brickell.

Amenities include a gigantic gym with over 100 machines, a steam room, spa, spinning studio, four pools, pool deck restaurant, and an interactive water feature. Miami's skyline is amid a dramatic transformation.



A small Google Map of Miami with a red location pin marking the site of Panorama Tower. The map includes the Google logo, "Map Data", and "Terms of Use" text.	<p>Panorama Tower</p> <p>1101 Brickell Avenue, Miami, Florida</p>
--	--